

The BIMiner System

A Comprehensive Business Process Solution

For the Drilling Industry



www.biminer.com



info@biminer.com



1(780) 669-9825

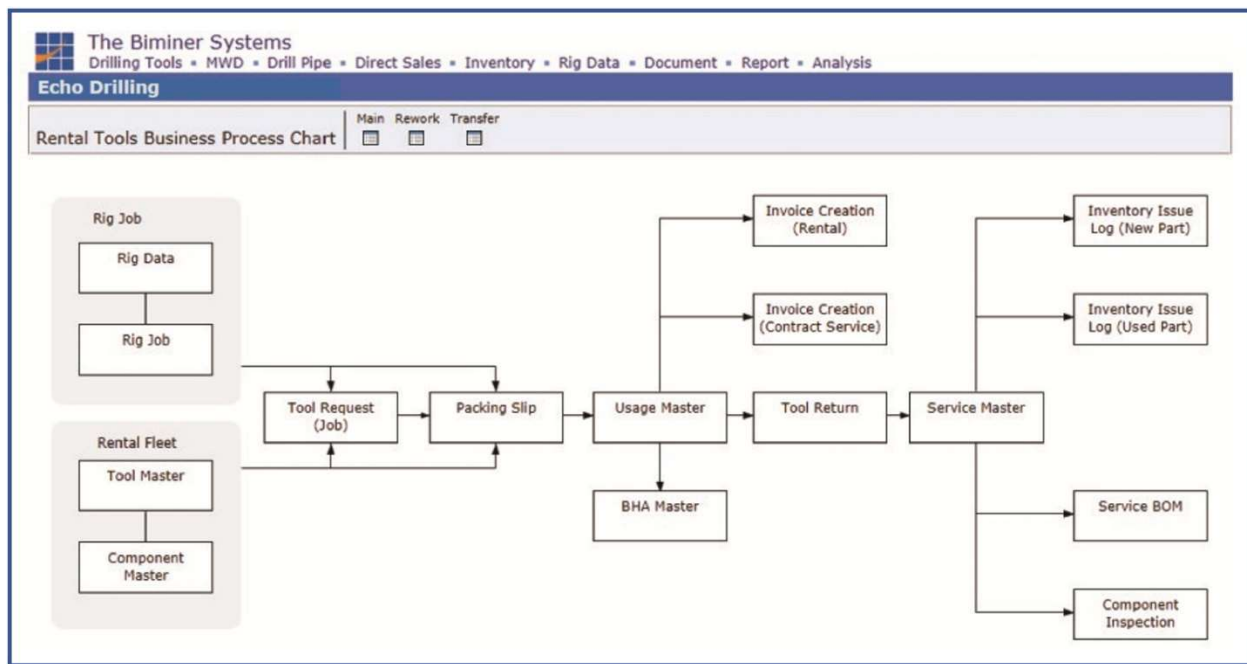


4436 97 Street NW
Edmonton, Alberta Canada T6E 5R9



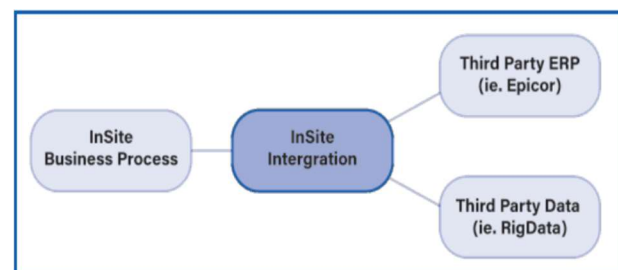
The BIMiner System

- The BIMiner System is a web application which provides business process solutions for downhole tools, including motor, jar, shock tool, drill pipe, MWD, and other drilling tools.
- It manages asset, distribution, sales, purchasing, inventory, service, inspection, rework, damage, incident and billing.
- It covers business process needs from growing companies with several customers to major oil and gas service companies with global operations.



BIMiner Integration

- BIMiner Integration integrates BIMiner systems with third party ERP systems, such as, Epicor and Microsoft Great Plains, seamlessly. This module has integrated part, customer, vendor, retail invoice, service contract invoice, sales invoice, service job, job BOM, job material releasing, inspection PO, rework PO, and rework shipping and receiving.



- It also has the ability to integrate RigData's locations and operator, and permit data.

BIMiner Notification

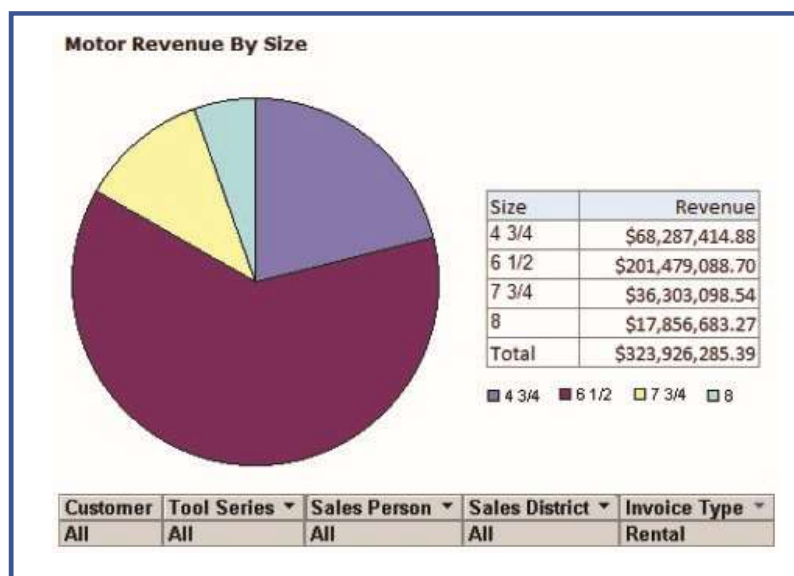
- BIMiner Notification provides notifications via email when specific events occur, such as:
 - Purchase Order approved
 - Incident created
 - Incident initial finding completed
 - Incident report requested
- It also delivers daily, weekly, and monthly reports to subscribers. Typical reports include:
 - Daily global fleet
 - Daily tool requests
 - Weekly rework back order
 - Monthly revenue, cost, and margin

BIMiner Mobile

- BIMiner Mobile is a mobile app. it allows users to search on tool, component, job, packing slip, usage, service, inspection, rework, damage, incident, purchase order, and invoice.
- It also allows user to browse business process documents on the go, such as invoice, BHA, service, damage, and incident reports

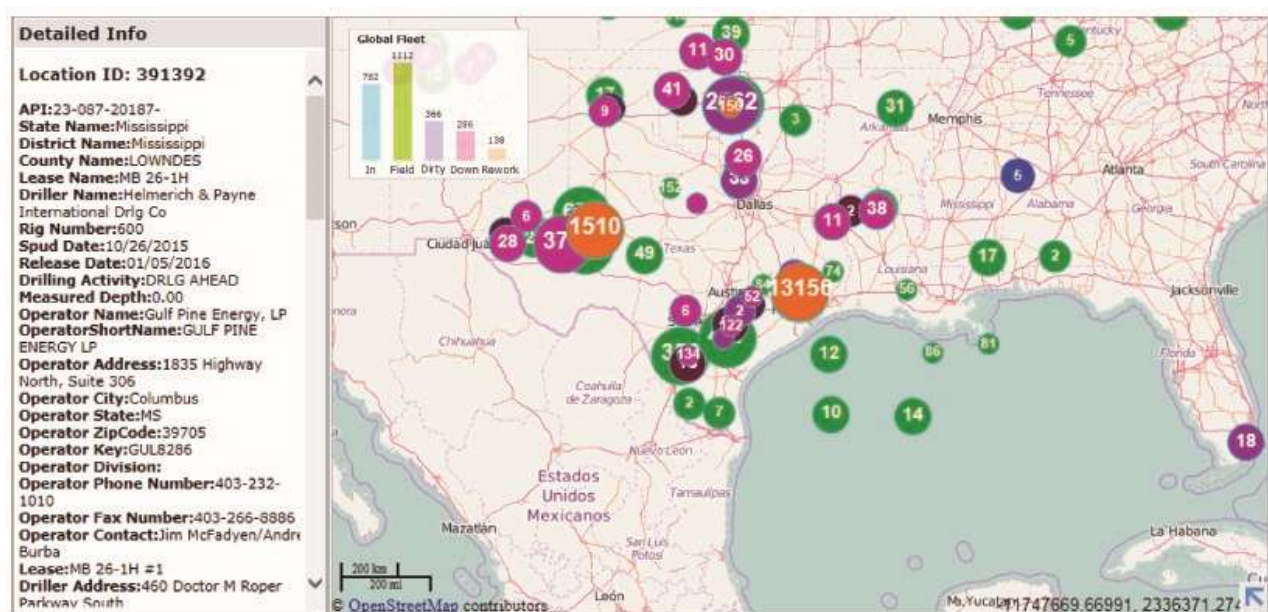
BIMiner Analysis

- BIMiner Analysis provides multi-dimensional analysis on fleet, revenue, cost, utilization, service, rework, and part consumption based on a back-end data warehouse.
- It also provides predictions on revenue, purchasing, and rework.



BIMiner Map

- BIMiner Map plots rig jobs, customers, service locations, stock locations, tools, and components on maps.
- It provides KPI(key performance indicator) analysis on maps, such as fleet, job, revenue, cost, and margin summary.
- It supports gesture recognition. With gesture recognition, BIMiner Map can be deployed on large video walls in sales or tool coordinator's offices.



DTM Modules

Module	Description	Comments
Basic Package	<ul style="list-style-type: none">- Asset (tool, component)- Distribution (shipping, receiving, transfer)- Inventory (PO, stock status, inventory release)- Usage (usage, component history)- Billing (rental, contract service, direct sales)	
Service	<ul style="list-style-type: none">- Service (service, inspection, labor)- Material (scrap, inventory parts)- 3rd party inspection PO- Rework (rework, PO, shipping, receiving, inspection)	
Incident	<ul style="list-style-type: none">- Incident (incident, findings, workflow, L1, 2, 3 reports)- Damage report	
Accounting Integration	<ul style="list-style-type: none">- Download inventory, cost, and revenue transactions into Excel for general entries to 3rd party accounting packages, such as Quickbooks, Simply Accounting.	
Notification	<ul style="list-style-type: none">- Incident workflow, R&D tool status changes, Tool Return	
Document Management	<ul style="list-style-type: none">- Document management on all selected modules	